

Description

This ceiling mount bracket is to be used when mounting LCD projectors to the ceiling.

Specifications	Vertical correction angle:	+20°, -5°
	Horizontal slant correction angle:	±10°
	Horizontal turn correction angle:	±5°
	Dimensions (W x H x D):	374 x 400-480 x 211 mm (14-23/32" x 15-3/4"-18-29/32" x 8-5/16")
	Weight:	2.8 kg (6.2 lbs)

Weights and dimensions shown are approximate. Specifications subject to change without notice.

Parts	Attachment plate	1	Holding bracket B	1
	Projector mount bracket	1	Washer-fitted hexagonal bolts (M6 x 12) ...	19
	Adjuster pole A	1	Washer-fitted screws (M4 x 10)	6
	Adjuster pole B	1	Wire rope	1
	Angle adjuster A	1	Flat wire clip	2
	Angle adjuster B	1	Clamp tube	2
	Holding bracket A	1		

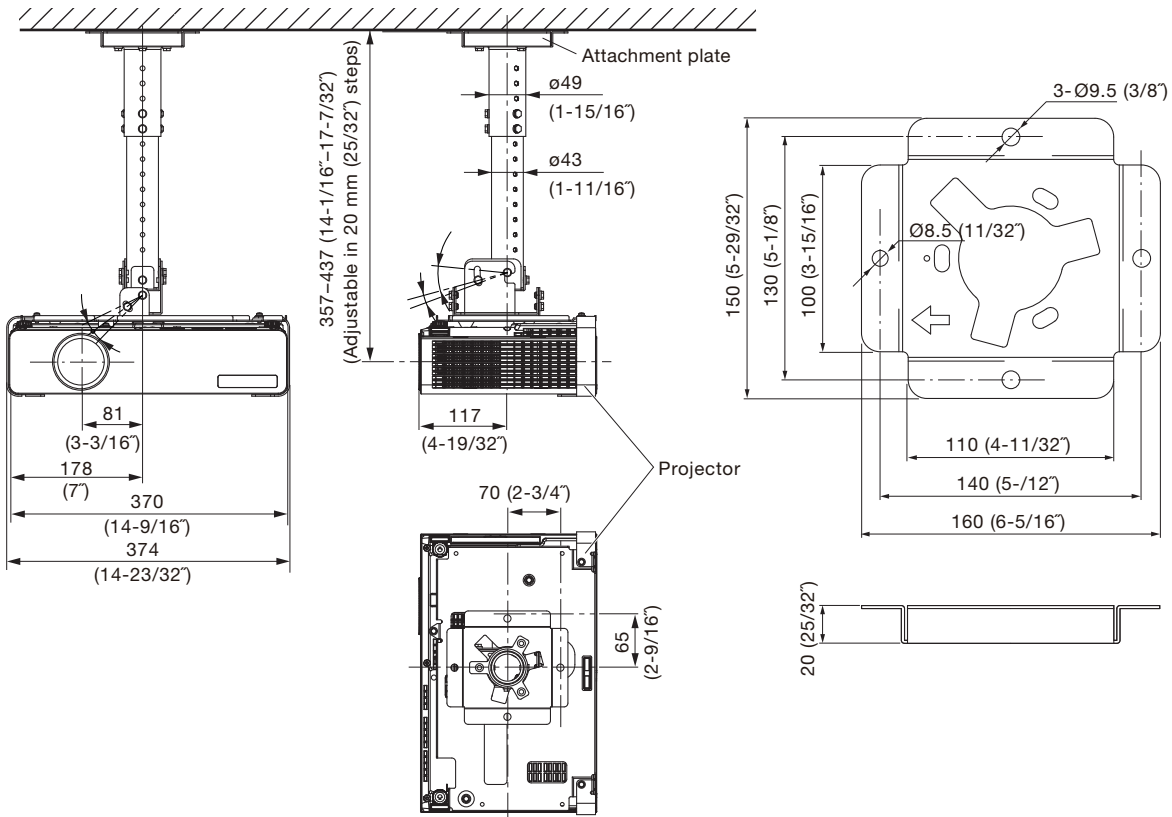
Caution:

- All mounting work must be done by a qualified technician.
- Ensure that the mounting (ceiling) area has sufficient strength.
- Read the enclosed mounting instructions carefully before starting the mounting procedure.
- Do not use a power screwdriver or impact screwdriver to tighten screws. A torque screwdriver or similar tool should be used.
- When the system is no longer to be used, have a qualified technician promptly remove and dispose of it.

Dimensions

Illustration shows the ET-PKB80 attached to the projector.

Attachment plate



unit : mm (inch)

NOTE: This illustration is not drawn to scale.